



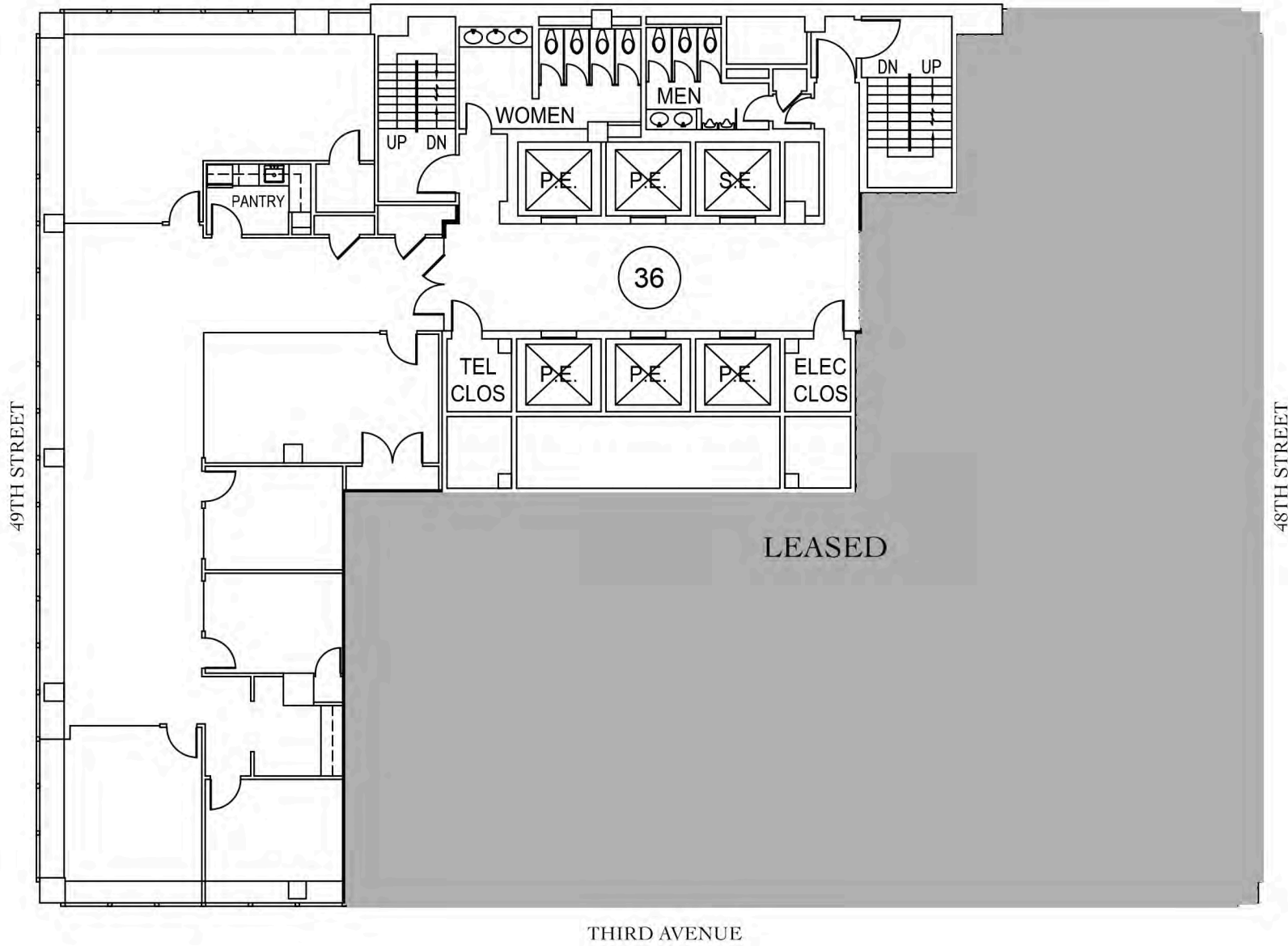
**777**  
**Third**  
optimism. confidence. imagination.

# 777 Third Avenue

PORTION OF THE 36TH FLOOR (3601) | 4,678 RSF | EXISTING CONDITIONS



THE WILLIAM KAUFMAN ORGANIZATION, LTD.



[777thirdave.com](http://777thirdave.com)

[sagespace.com](http://sagespace.com)

**Michael I. Lenchner**  
Vice President & Director of Leasing  
T. 212 755-5151  
[milenchner@sagerealty.com](mailto:milenchner@sagerealty.com)

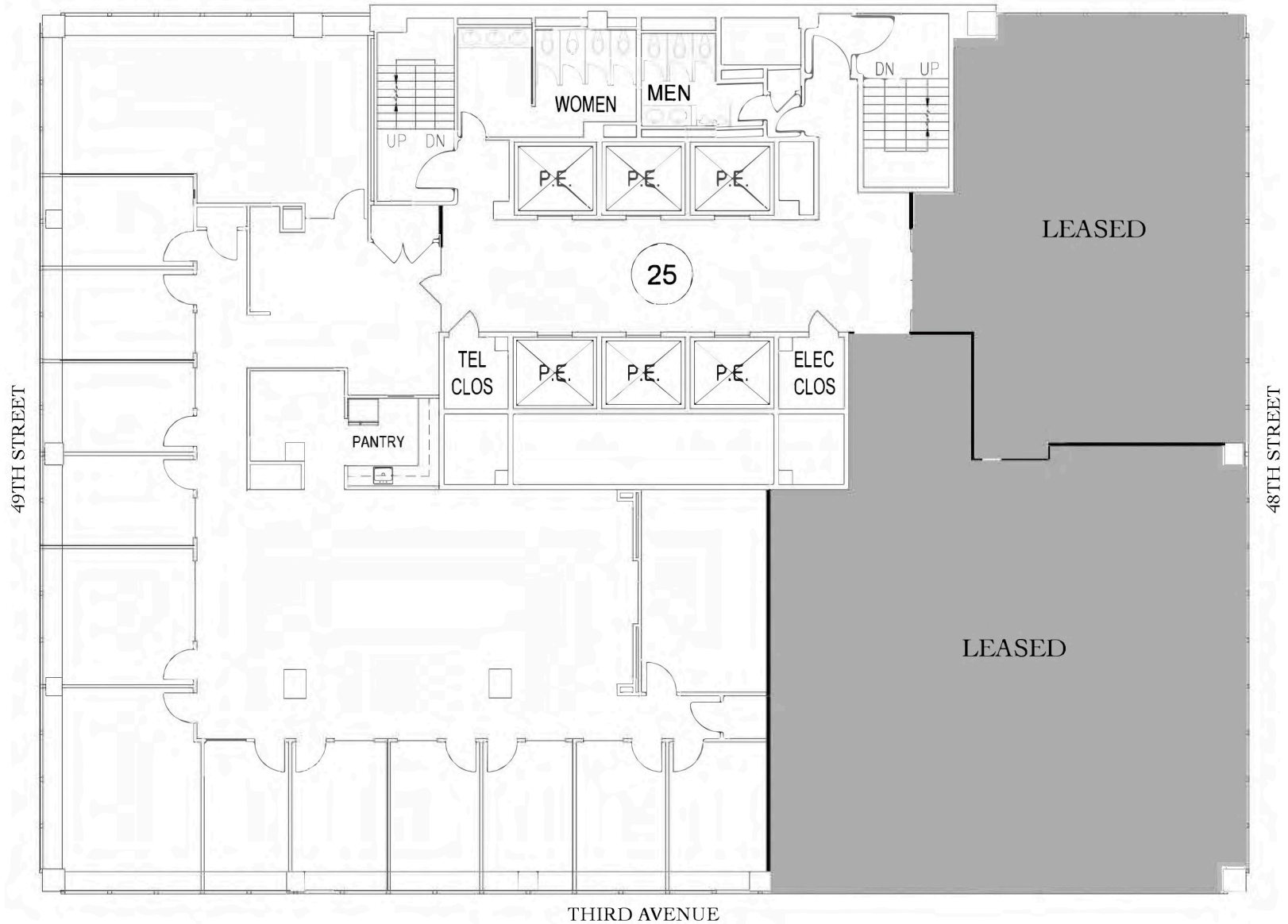


# 777 Third Avenue

PORTION OF THE 25TH FLOOR (2501) | 7,383 RSF | EXISTING CONDITIONS



THE WILLIAM KAUFMAN ORGANIZATION, LTD.



[777thirdave.com](http://777thirdave.com)

[sagespace.com](http://sagespace.com)

**Michael I. Lenchner**

Vice President & Director of Leasing

T. 212 755-5151

[mlenchner@sagerealty.com](mailto:mленchner@sagerealty.com)



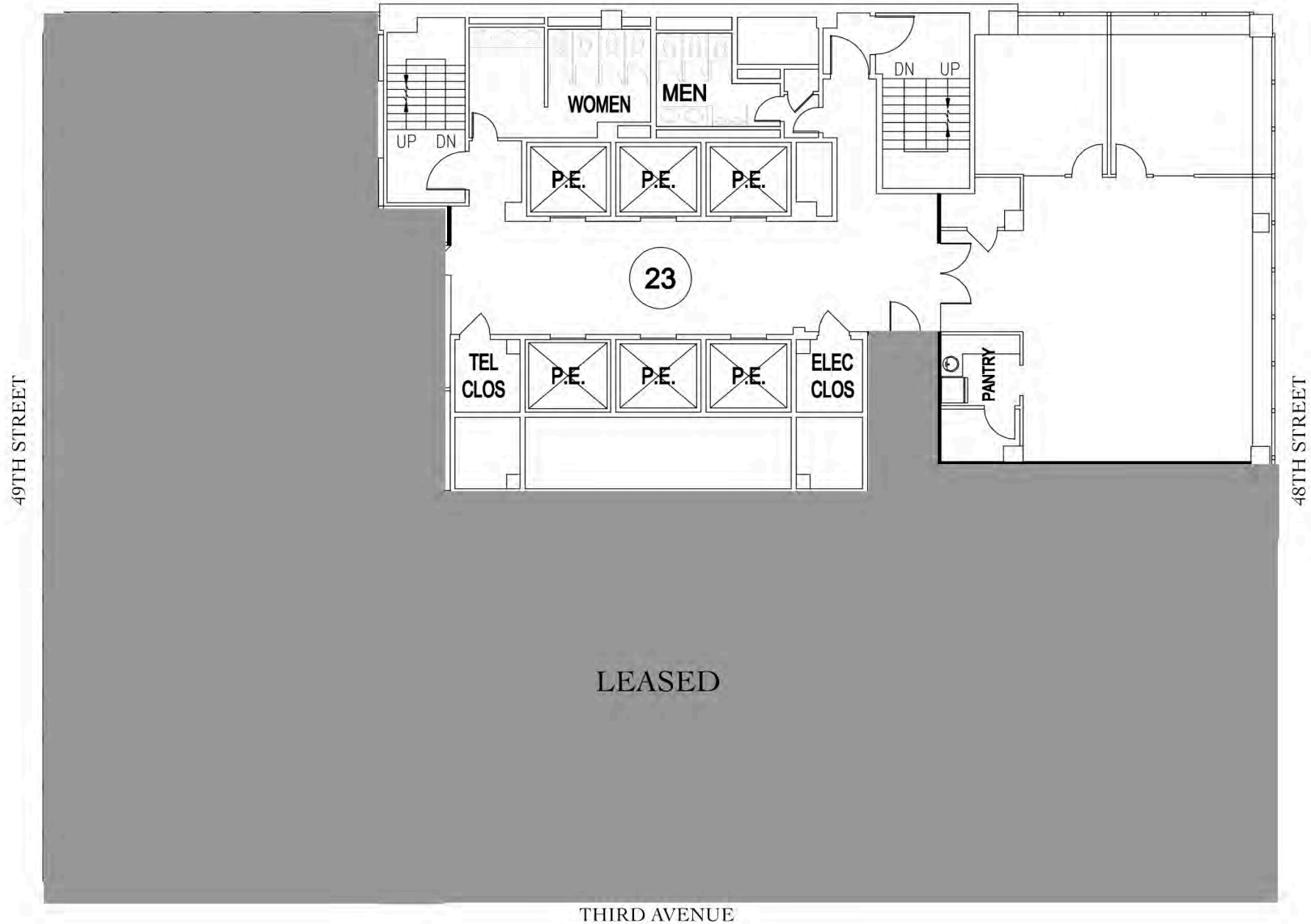
Sage Realty Corporation

# 777 Third Avenue

PORTION OF THE 23RD FLOOR (2302) | 2,245 RSF | EXISTING CONDITIONS



THE WILLIAM KAUFMAN ORGANIZATION, LTD.



[777thirdave.com](http://777thirdave.com)

[sagespace.com](http://sagespace.com)

**Michael I. Lenchner**  
Vice President & Director of Leasing  
T. 212 755-5151  
[mlenchner@sagerealty.com](mailto:mlenchner@sagerealty.com)



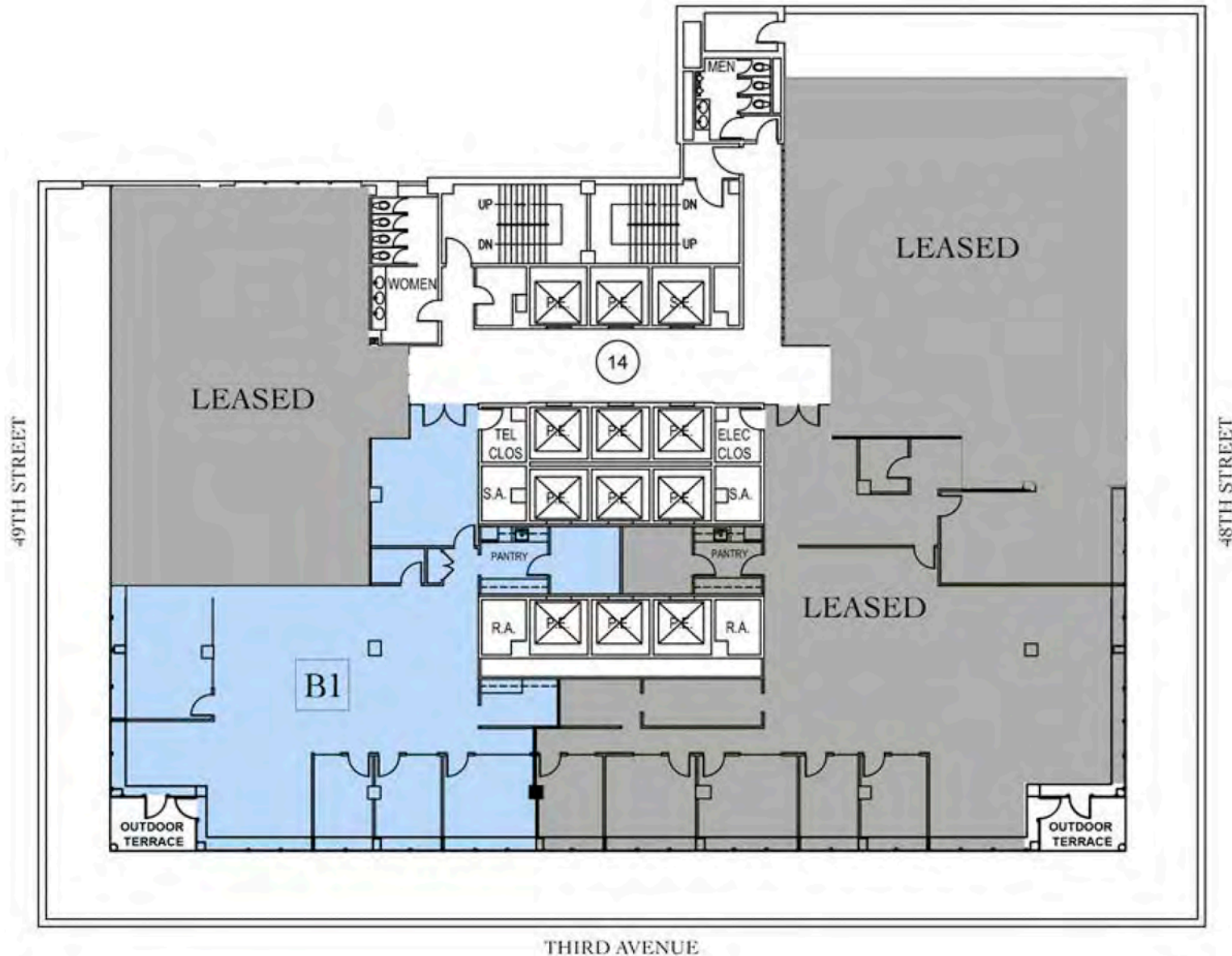


# 777 Third Avenue

PORTION OF THE 14TH FLOOR (1402) | 4,224 RSF | EXISTING CONDITIONS



THE WILLIAM KAUFMAN ORGANIZATION, LTD.



777thirdave.com

**Michael I. Lenchner**  
Vice President & Director of Leasing  
T. 212 755-5151  
mlenchner@sagerealty.com

THIRD AVENUE

sagespace.com

