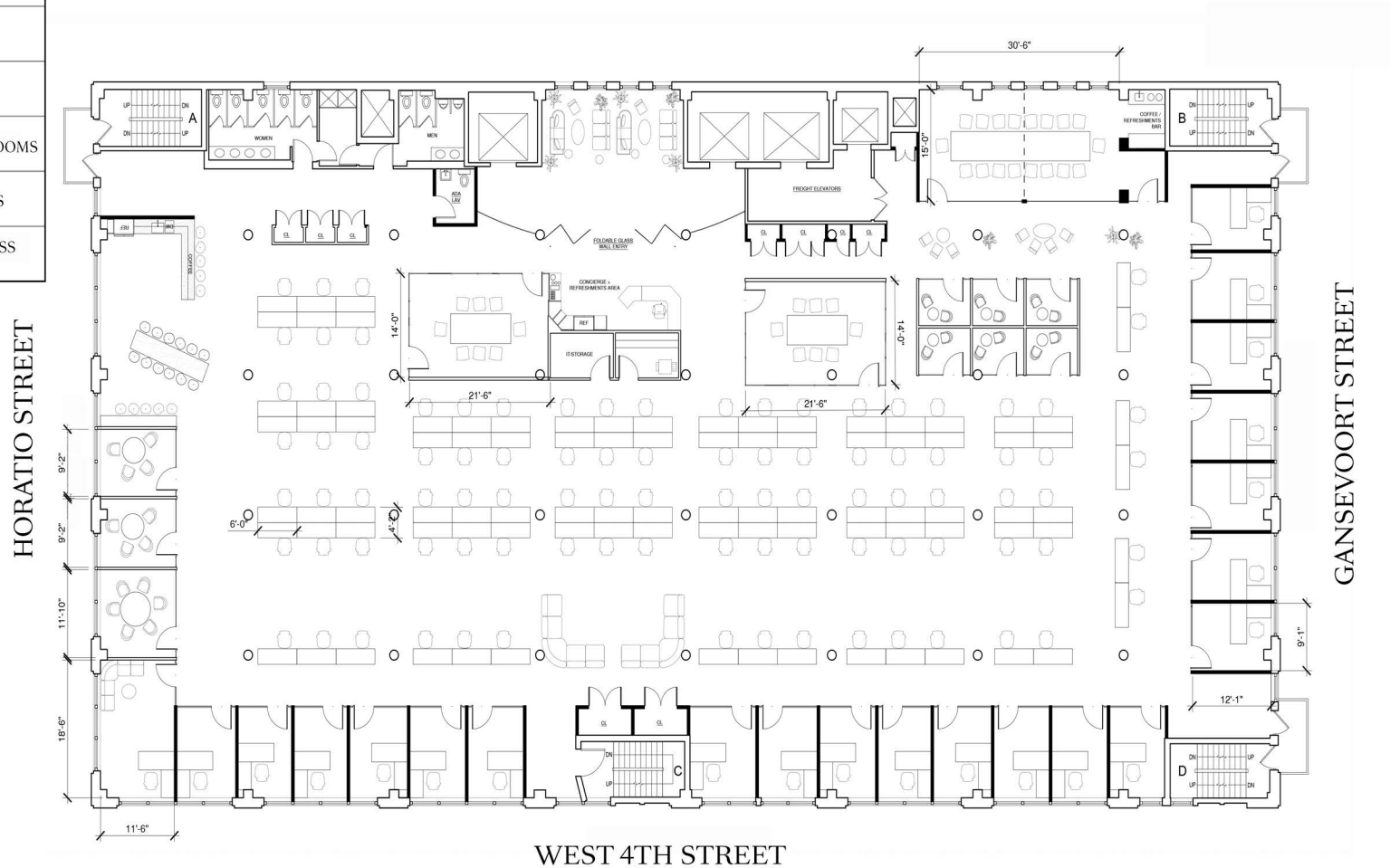


2GANSEVOORT

ENTIRE 8TH FLOOR | 23,000 RSF | PROPOSED OFFICE INTENSIVE & OPEN LAYOUT PLAN

| # | TYPE |
|-----|----------------------|
| 22 | OFFICES |
| 94 | WORKSTATIONS |
| 3 | CONFERENCE ROOMS |
| 3 | MEETING ROOMS |
| 6 | PHONE/WELLNESS ROOMS |
| 116 | TOTAL |



2gansevoort.

sagespace.com

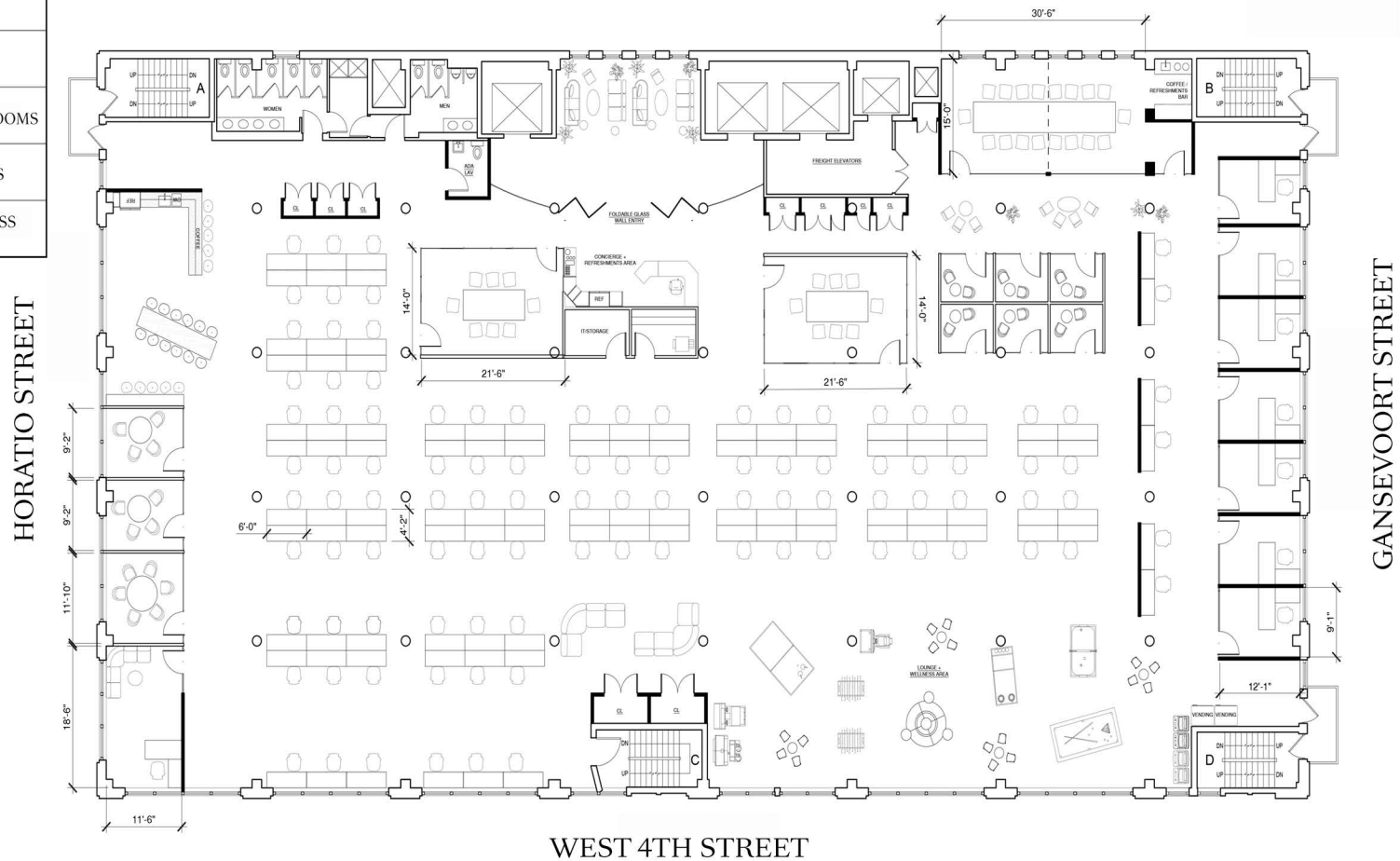
Michael I. Lenchner
 Executive Vice President & Director of Leasing
 T. 212 758-0437
 mlenchner@sagerealty.com



2 GANSEVOORT

ENTIRE 8TH FLOOR | 23,000 RSF | PROPOSED OPEN LAYOUT PLAN

| # | TYPE |
|-----|----------------------|
| 8 | OFFICES |
| 104 | WORKSTATIONS |
| 3 | CONFERENCE ROOMS |
| 3 | MEETING ROOMS |
| 6 | PHONE/WELLNESS ROOMS |
| 112 | TOTAL |



2gansevoort.

sagespace.com

Michael I. Lenchner
 Executive Vice President & Director of Leasing
 T. 212 758-0437
 mlenchner@sagerealty.com



2 GANSEVOORT

ENTIRE 8TH FLOOR | 23,000 RSF | CORE & SHELL PLAN



2gansevoort.

sagespace.com

Michael I. Lenchner
Executive Vice President & Director of Leasing
T. 212 758-0437
mlenchner@sagerealty.com

