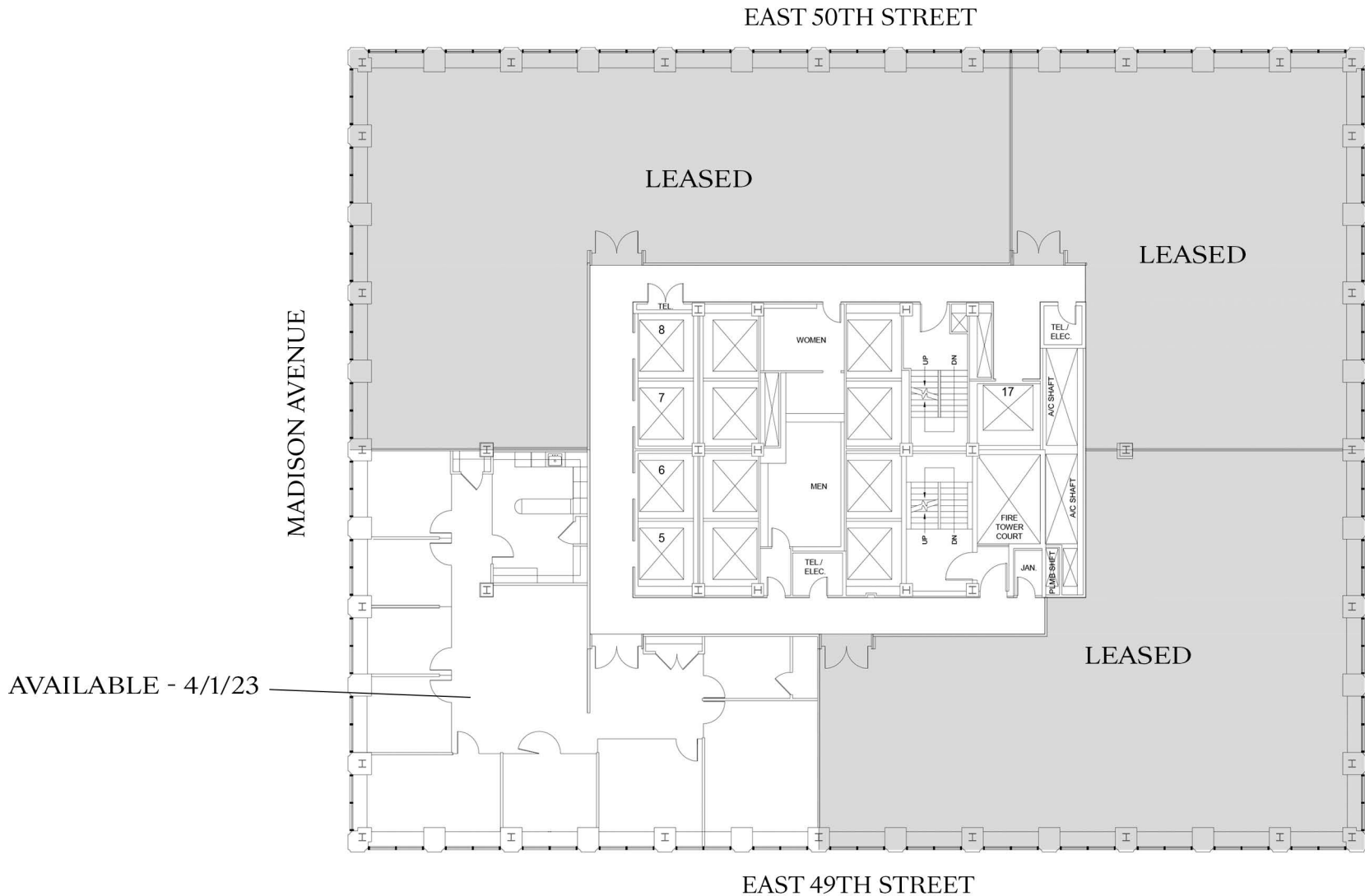


# 437 Madison Avenue

PORTION OF THE 19TH FLOOR | 4,227 RSF | EXISTING CONDITIONS



[sagespace.com](http://sagespace.com)



437 Madison Avenue  
New York, NY 10022  
[www.437MadisonAve.com](http://www.437MadisonAve.com)

Michael I. Lenchner  
(212) 758-0437  
[milenchner@sagerealty.com](mailto:milenchner@sagerealty.com)