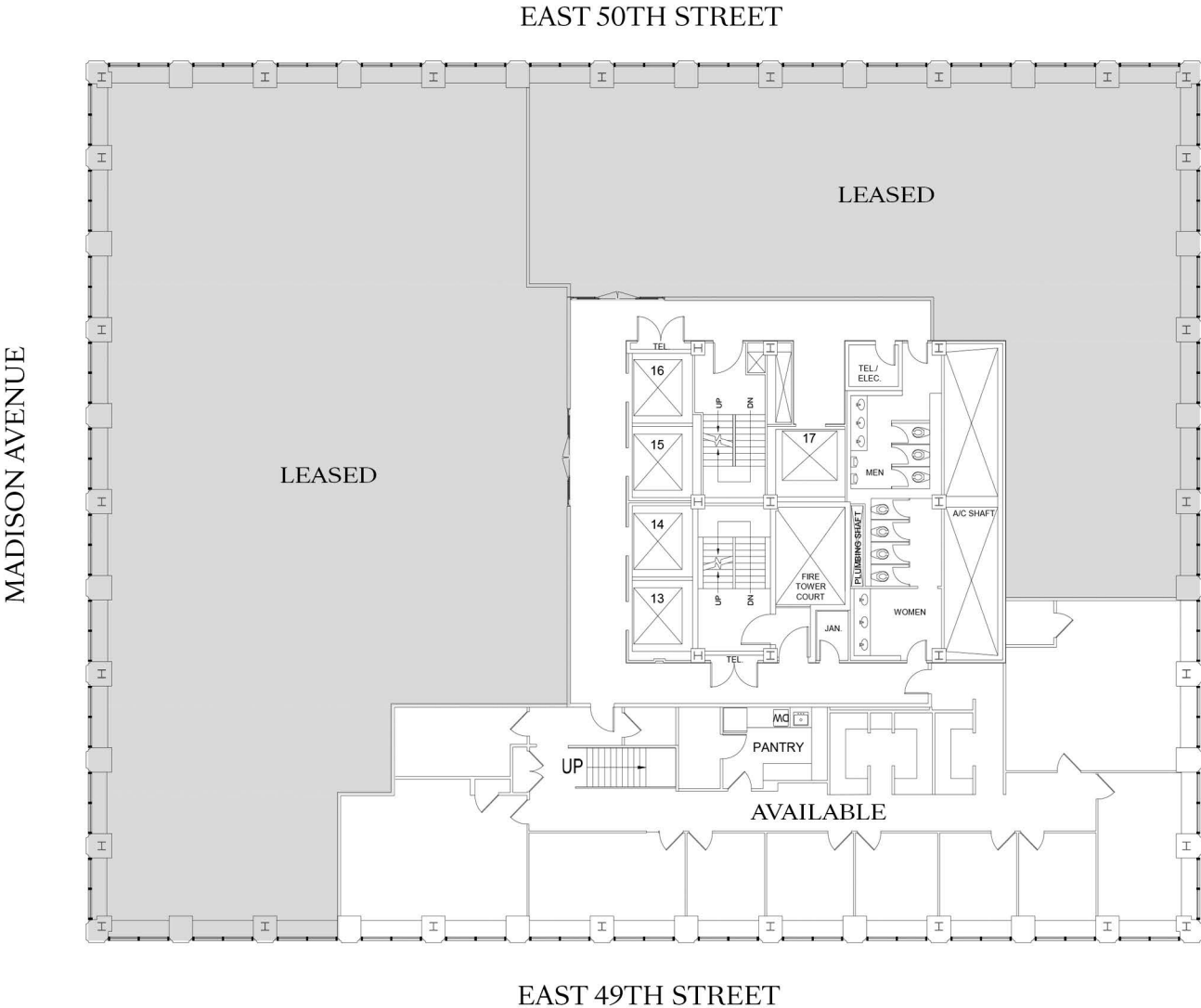


437 Madison Avenue

PORTION OF THE 36TH FLOOR | 5,277 RSF | EXISTING CONDITIONS



sagespace.com



437 Madison Avenue
New York, NY 10022
www.437MadisonAve.com

Michael I. Lenchner
(212) 758-0437
milenchner@sagerealty.com

437 Madison Avenue

PORTION OF THE 36TH FLOOR | 5,277 RSF | CORE & SHELL PLAN

